

FITTING ALL THE PIECES

Central Michigan District Health Department
Case Management Program

May 2010

Volume III, Issue V

Michigan Medical Marihuana Program

I'm again receiving so many calls from folks interested the medical marihuana program, so, this month I've included some general information. For those of you with internet access, you can find all the latest happenings and forms at www.michigan.gov/mmp.

General Information

- You must be a Michigan resident to be a registered patient in the Michigan Medical Marihuana Program (MMMP).
- There is an application fee to register for the MMMP. The fee cannot be waived, although it can be reduced under certain circumstances.
- You must have a qualifying debilitating medical condition as listed on the Attending Physician's Statement.
- The MMMP cannot supply you with seeds or starter plants, or give you advice on how to grow medical marihuana.
- Your physician must be a Medical Doctor (MD) or Doctor of Osteopathic Medicine (DO) licensed to practice in Michigan. You must have an established patient/physician relationship with your "attending physician." Other licensed health professionals such as Chiropractors, physician assistants and nurse practitioners cannot sign the documentation.
- The MMMP cannot refer you to a physician. The MMMP does not have a physician referral list.
- You, or your designated primary caregiver, may grow your marihuana. There is no place in the state of Michigan to legally purchase medical marihuana.
- The MMMP cannot find a designated primary caregiver for you. The MMMP does not keep a referral list of persons who want to be caregivers for patients. (You are not required to list a caregiver unless you are less than 18 years old.) Your caregiver cannot be your physician.
- If you decide to change your caregiver, it is your responsibility to notify him or her that he or she is no longer protected under the law. The MMMP does not communicate directly with caregivers.

...continued on page 2

Catrina's Corner

Well, we had a fabulous turn-out at April's patient dinner and I'm really looking forward to the lunch we have planned for this month! We have a very special guest speaker from Community Mental health presenting for us. Andrea Eiseler MA, LPC will be discussing HIV, mental health, and suicide issues. She has spoken to our group before on other topics and it was really such a treat. If you missed her then, be sure to attend this month's presentation. I look forward to seeing you all there!

Clinic Dates

May 7, 2010
8:30am - 4:30pm

May 21, 2010
8:30am - 4:30pm

June 25, 2010
8:30am - 4:30pm



Our office will be closed on
May 31st in observance of
Memorial Day.

Commitment To Change

Ready.

Willing..

And Able...

Making Health A Priority



KATTI'S TIPS - Food Safety at Home: Handling Foods the Safe Way

Protecting your immune system is key in fighting off infection. That is why practicing food safety is important, especially when you have HIV. Without being "food safe" you could be introducing your body to toxins, infections and illnesses.

The first step in preventing food borne illnesses is to **handle your food properly**. It may sound silly but there is a right and a wrong way to handle food. Adhering to the following steps are just a few

ways to protect you and your loved ones from getting sick from food.

Food Handling Techniques

1. If you are sick, ask someone else in your household or a friend to assist you in the preparation of meals
2. If you have cuts, scrapes or abrasions, cover them with a band-aid or use gloves
3. Never use your hands as a utensil

4. Wash hands after every step in the cooking process
Replace sponges and towels frequently

Food safety is vital to good health and proper food techniques are just the beginning. Stay tuned for further food safety tips in upcoming editions of this newsletter.



...MMP continued from page 1

- The MMMP will only speak directly with the patient. All written requests to release information must be signed and dated by the patient. The MMMP will not accept written or verbal requests for information from your caregiver or any other person without your permission.
- The Act neither protects marijuana plants from seizure nor individuals from prosecution if the federal government chooses to take action against patients or caregivers under the federal Controlled Substances Act.

Support Group

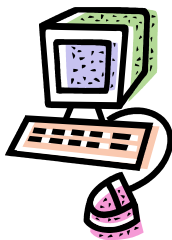
NEW TIME IS 1:30PM - 3:00PM

| | |
|---------------|------------------------------|
| May 17, 2010 | HIV & Suicide: Patient Lunch |
| June 21, 2010 | To Be Announced |
| July 19, 2010 | Picnic |

Support Group meets 1:30-3:00pm. Call Catrina at 989-539-6731 ext. 8221 for location and directions

Websites

www.thebody.com
www.cmdhd.org
www.aidsinfo.nih.gov
<http://aroundthepatenutrition.blogspot.com>



Questions? Comments? Concerns?

Contact:

*Catrina Weber, Case Manager

Phone: 989-539-6731, Ext. 8221