



NURSE NAVIGATOR

Our Hep C Navigator will be available throughout your treatment providing:



- Appointment Scheduling
- Coordination of Labs & Immunizations
- Medication Access
- Insurance Assistance

There are potential medication assistance funds available, dependent on insurance coverage and availability.

Contact our Navigator for more information:



Kelly - Hep C Nurse Navigator
989-259-2859



Kathy - Hep C Nurse Navigator
989-491-5438

HELPFUL LINKS



Mavyret Info



Epclusa Info



Our Locations

Arenac County:
4489 W. M-61, Suite 3
Standish, MI 48658

Clare County:
815 N. Clare Ave., Suite B
Harrison, MI 48625

Gladwin County:
103 N. Bowery
Gladwin, MI 48624

Isabella County:
2012 E. Preston St.
Mt. Pleasant, MI 48858

Osceola County:
22054 Professional Dr.
Reed City, MI 49677

Roscommon County:
200 Grand Ave, Suite A
Prudenville, MI 48651



Visit our website for more information!

www.cmdhd.org

CENTRAL MICHIGAN DISTRICT HEALTH DEPARTMENT



COMMUNITY HEALTH DIVISION

Taking Steps Forward to Improve Health



WHAT TO EXPECT



TREATMENT TIMELINE

MEDICATION OPTIONS



1 Consultation with Provider

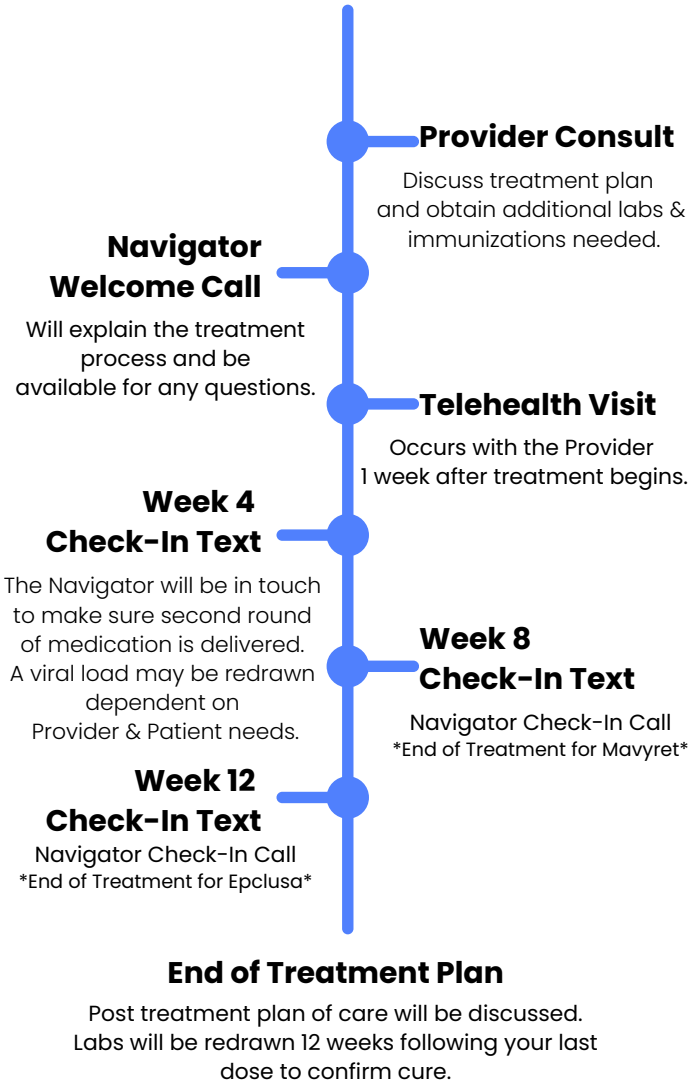
After labs have been completed, you will meet with a Provider to discuss results and treatment plan.

2 Securing Medication

Our Hep C Nurse Navigator will be in touch to arrange getting your medication in hand to start treatment.

3 Treatment Follow-Up

Throughout treatment, we will be in contact several times to assure medication is being taken as prescribed and no complications arise.



Mavyret

- 8 Week Treatment
- 3 Tablets Daily
- Taken with Food

Epclusa

- 12 Week Treatment
- 1 Tablet Daily
- Taken with or without Food

