



# ANNUAL REPORT 2022



Central Michigan  
District Health  
Department



# A MESSAGE FROM OUR HEALTH OFFICER

---

## To the residents of Arenac, Clare, Gladwin, Isabella, Osceola, and Roscommon Counties:

On behalf of the Central Michigan District Health Department Board of Health and staff, I am pleased to present our 2022 Annual Report. The staff at the Central Michigan District Health Department has worked hard to accomplish our mission to promote health and physical well-being by providing preventive health care, education, and environmental safety to all members of the community. The 2022 Annual Report contains data, success stories, and evidence of our work this past year.

I continue to be amazed at the response of our staff to the COVID-19 pandemic. They have worked tirelessly to protect the health of our communities. I would also be remiss not to thank our amazing volunteers and partners in the Central Michigan region that have assisted us along the way. Your contributions helped immensely.

As you read this report, you will see program highlights that include the following: we were able to serve 673 families through our Children's Special Health Care program, which provides medical specialty care to children from birth to age 21 who have a qualifying medical diagnosis, regardless of insurance; staff conducted 1,454 restaurant inspections; 8,718 regular

immunizations and influenza vaccines were given; 7,475 hearing and 12,134 vision screenings were completed; and our WIC program had an average monthly enrollment of 5,090.

The Community Connections program began in July 2022. This referral program utilizes Community Health Workers to help address healthcare and social needs of individuals. In the short time that this program has existed, 211 community needs have already been addressed. This is just a sampling of the impact our programs have on the community. I hope that you'll take the time to read this report in greater detail to understand what your local health department is doing daily to make our communities healthier.

Our services and programs are designed to improve the overall health status of our residents by engaging the community and collaborating with our many partners. Our health department staff works hard to provide preventive health services to citizens within our six-county jurisdiction. I am honored to be associated with such a dedicated public health staff. Together, we can create a healthier community!



**Central Michigan District Health Department**  
*Promoting Healthy Families, Healthy Communities*

Sincerely,

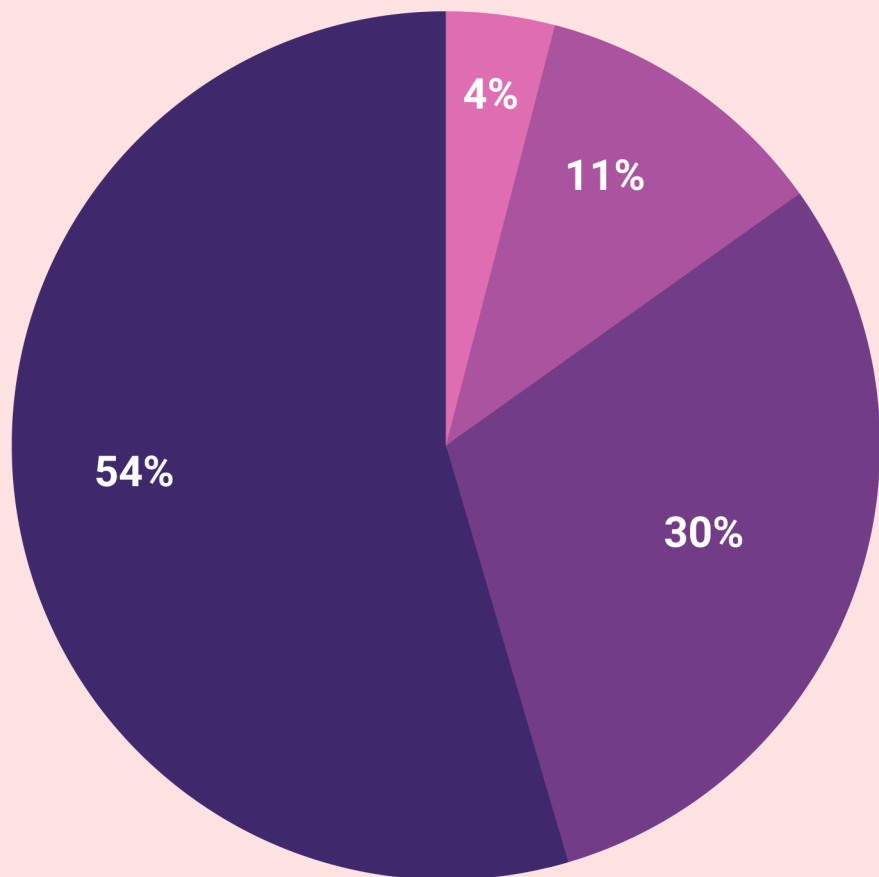
Steve Hall, R.S., M.S.  
Health Officer





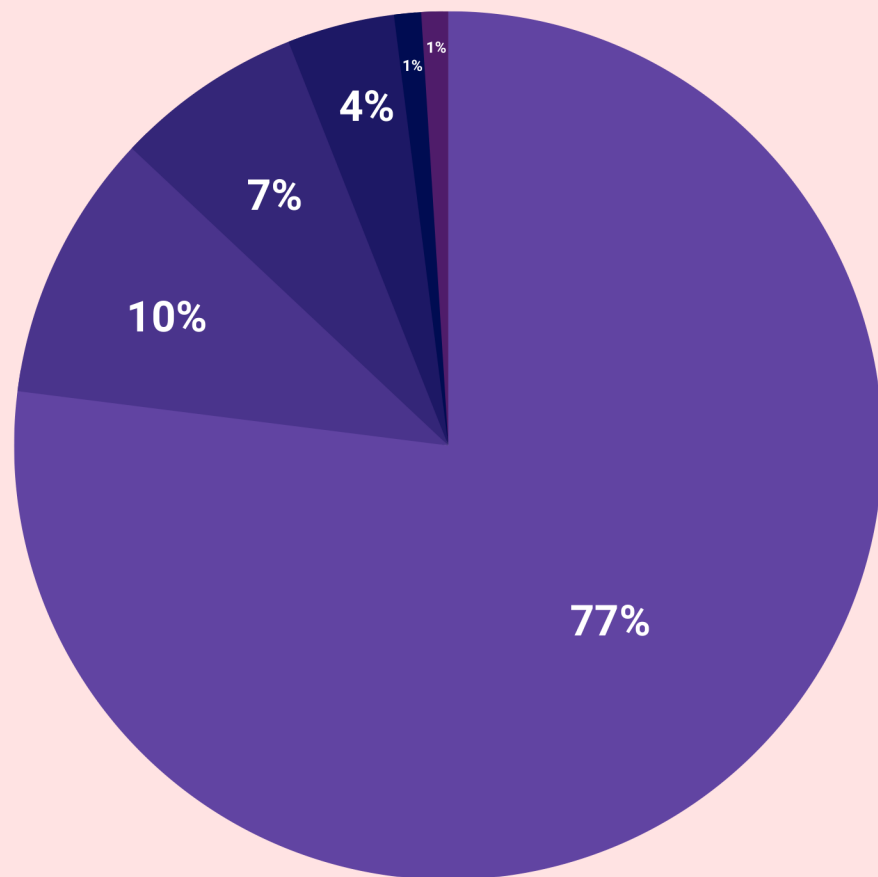
# REVENUE AND EXPENSES

## 2022 REVENUE



- State/Federal Funding
- Fees/Collections
- Local Revenue
- Other

## 2022 EXPENSES



- Salaries/Fringe Benefits
- Supplies
- Other
- Contractual
- Travel
- Communications



# EMERGENCY PREPAREDNESS

---



CMDHD's Emergency Preparedness staff continued to provide COVID-19 vaccine and booster information to our community, as recommendations were updated. Our staff worked to keep the public and our community partners informed of other emergent communicable diseases and public safety situations. In addition, we worked to incorporate the lessons learned from the COVID-19 pandemic into future emergency preparedness planning.

EP STAFF WORKED WITH  
**14**  
LOCAL, REGIONAL, AND  
STATEWIDE GROUPS

**99.24%**  
OF CMDHD EMPLOYEES  
HAVE COMPLETED THE  
100, 200, 700 & 800  
FEMA ICS COURSES

**85**  
CMDHD EMPLOYEES WERE  
REGISTERED USERS OF THE  
MICHIGAN HEALTH ALERT  
NETWORK

OVER  
**10,000**  
PIECES OF PPE DISTRIBUTED

**34**  
PRESS RELEASES DISTRIBUTED



# COVID-19 BY THE NUMBERS

MDHHS provided regular support, guidance, recommendations, and data for local health departments to use everyday in our day to day work while trying to decrease the rate of cases and protect more individuals in our communities. The MDHHS COVID 19 website ([www.michigan.gov/coronavirus](http://www.michigan.gov/coronavirus)) was kept up to date with the most recent information needed.

## Thank you to these partners that assisted us with COVID vaccinations in the community:

**Arenac** - Standish-Sterling High School, Arenac Eastern High School, Divine Shepherd Christian Community Church, Ascension Standish Hospital, Arenac County Emergency Management, Vantage Plastics, Arenac County Fair, and Arenac Road Commission

**Clare** - Witbeck's Family Foods, City of Clare, Farwell High School, Clare Congregational Church, Hayes Township Hall, and Clare County Senior Services

**Gladwin** - Knights of Columbus #5280, Gladwin High School, Beaverton Jr/Sr High School, Our Savior Lutheran Church, Gladwin County Fire Department and EMS, Gladwin County Emergency Management and Gladwin County Fair

**Isabella** - Saginaw-Chippewa Indian Tribe & Tribal Council, Nimkee Memorial Wellness Center, Ric's Food Center, Central Michigan University, Home Depot - Mt. Pleasant, Nottawa & Sherman Township



Fire, Coe Township, MidMichigan Health, McLaren Central Michigan, Isabella County Emergency Management, Alma College, Michigan State University, Michigan Department of Transportation, Mt. Pleasant Municipal Airport, Isabella County Central Dispatch/911, Mt. Pleasant Fire Department, Mobile Medical Response Saginaw-Chippewa Indian Tribe Tribal Fire, Coyne Oil, Strickler Center, and Isabella County Fair

**Osceola** - Church of the Nazarene - Reed City, Osceola County Emergency Management, Osceola County 4H-FFA Fairgrounds, Crossroads Community Church

**Roscommon** - Good Shepherd United Methodist Church, Roscommon County Emergency Management, Roscommon Area Public Schools, Houghton Lake Community Schools, Charlton Heston Academy

	Arenac	Clare	Gladwin	Isabella	Osceola	Roscommon	Total
COVID Vaccinations	1,694	4,240	3,576	5,088	1,378	1,459	17,435
Positive COVID Cases	2,172	4,664	3,459	9,354	3,214	3,130	25,993



# ENVIRONMENTAL HEALTH

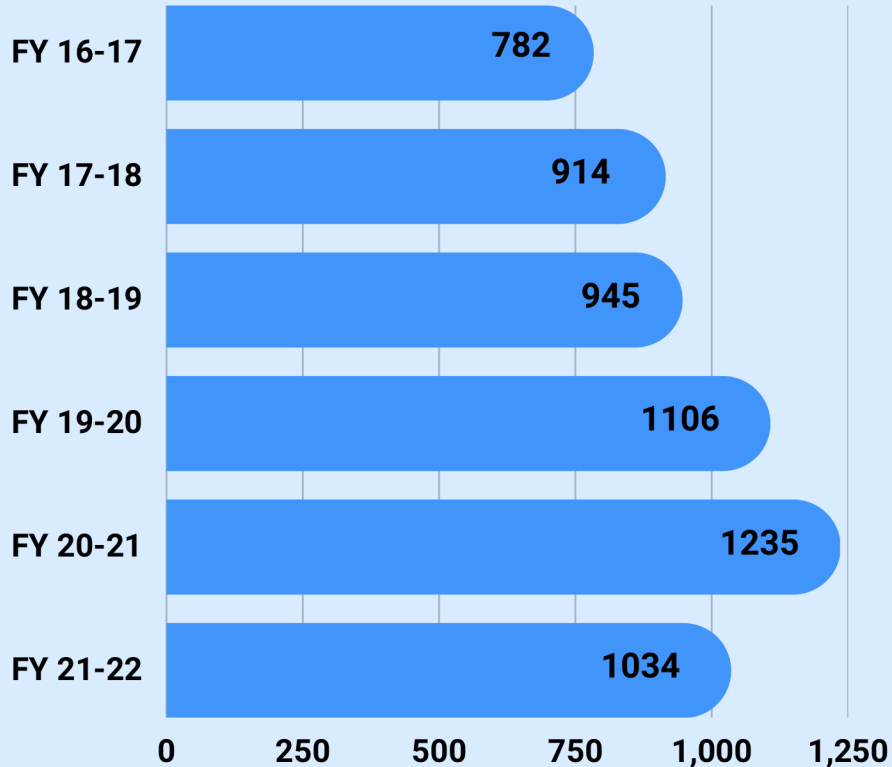
## ONSITE SEWAGE TREATMENT SYSTEMS



Fiscal Year 2022 On-Site Sewage Permits

County	On-Site Sewage Permits
Arenac	78
Clare	225
Gladwin	197
Isabella	242
Osceola	137
Roscommon	155

On-Site Permits Six Year Totals





# ENVIRONMENTAL HEALTH

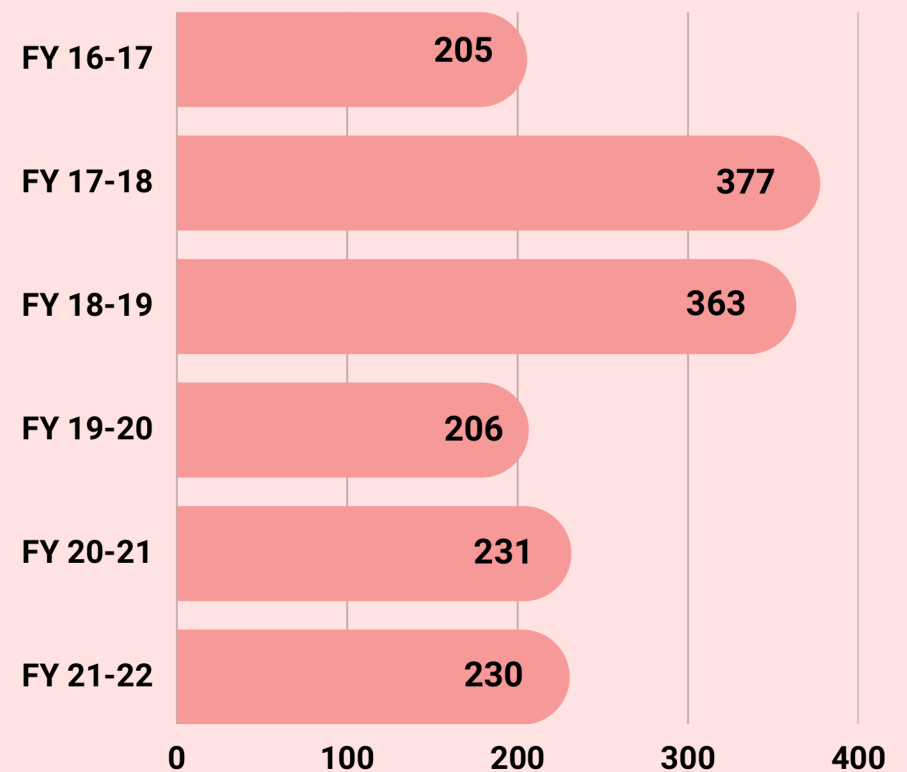
## EXISTING SEWAGE SYSTEM EVALUATIONS

### Fiscal Year 2022 Existing System Evaluations

County	Existing System Evaluations
Arenac	7
Clare	30
Gladwin	110
Isabella	37
Osceola	35
Roscommon	11



### POS and ESE Six Year Totals



# ENVIRONMENTAL HEALTH

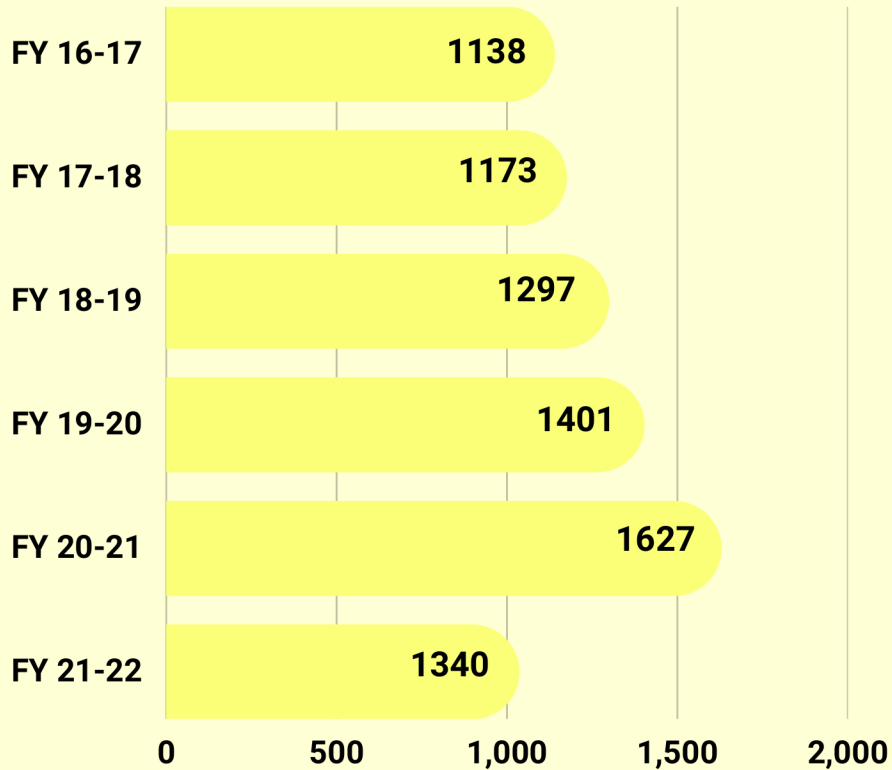
## DRINKING WATER WELLS



Fiscal Year 2022 Well Permits

County	Well Permits
Arenac	72
Clare	304
Gladwin	279
Isabella	248
Osceola	178
Roscommon	259

Well Permits Six Year Totals





# ENVIRONMENTAL HEALTH

## FOOD SERVICE EVALUATIONS

### Fiscal Year 2022 Food inspections

County	Food Inspections
Arenac	89
Clare	198
Gladwin	155
Isabella	586
Osceola	159
Roscommon	267



Food service evaluations are an important opportunity for staff to work with operators in maintaining and enhancing their food safety procedures.

--Steve King, Director of Environmental Health Services

# ENVIRONMENTAL HEALTH

## WATER LAB DATA



**Fiscal Year 2022 Water Testing Services**

County	Drinking Water Samples	Beach Samples
Arenac	388	159
Clare	654	39
Gladwin	936	88
Isabella	207	89
Osceola	223	40
Roscommon	352	119

**Fiscal Year 2022 Other Water Testing Services**

Midland County Beach Samples	42
All Other County Samples	46
Other Surface Samples	10
Total Pool Samples	76



# HEALTH PROMOTION FAMILY PLANNING PROGRAM

The Family Planning Program makes available a general reproductive health assessment, comprehensive contraceptive services, related health education counseling, and referrals as needed. The program's strong educational and counseling component helps to reduce health risks and promote healthy behaviors. This important program is aimed to prevent any unintended pregnancy and to provide preconception counseling to those seeking pregnancy. For every \$1 spent in Title X Family Planning clinics, there is over \$4 saved in health care costs.

Services are available to anyone of any income. Individuals with income levels at or below poverty can receive the full array of programs and services at a reduced cost. No one is denied services for inability to pay. Services offered at Central Michigan District Health Department include a general health assessment and physical exam, laboratory tests, prescription of contraceptives, pregnancy testing, client and community health education, and follow-up and referrals for all genders.



**1,296**  
**CLIENTS  
SERVED**

**30**  
**PrEP CLIENTS  
SERVED**



# HEALTH PROMOTION

## BREAST AND CERVICAL CANCER NAVIGATION PROGRAM



CMDHD provides and arranges for breast and cervical cancer screening services. This includes clinical breast exams, screening mammograms, pelvic exams, pap smears and patient education. For income eligible women without insurance, these services are provided with a grant from the U.S. Centers for Disease Control and Prevention through the State of Michigan. These women receive free screenings for breast and cervical cancer. For those with cancer diagnoses, case management is provided for treatment and acquiring insurance coverage. This program provides lifesaving screenings to women who have no access to breast or cervical cancer screening otherwise.

CMDHD also offers navigation services for women with insurance who need help accessing their screening services. Staff can help clients make appointments, find transportation, or further explain the breast and cervical cancer screening process to ensure these women receive their services.

In FY21, BC3NP was slated for a caseload of 76 clients. Further BC3NP funding was granted to CMDHD's program for serving an additional 27 clients over caseload.



# BC3NP

Breast & Cervical Cancer  
Control Navigation Program

# 103

## INDIVIDUALS WERE PROVIDED WITH BC3NP SERVICES



# HEALTH PROMOTION

## SEXUALLY-TRANSMITTED DISEASE CONTROL PROGRAM

Sexually transmitted diseases affect people of all ages, genders, and backgrounds. Because over 20 million new cases of STDs are diagnosed each year, it is a very important job to educate on these diseases, test clients annually, and treat cases.

CMDHD's offered tests include chlamydia, gonorrhea, syphilis, hepatitis C, and HIV.

STD services offered at CMDHD:

- STD Testing
- STD Treatment
- STD Education
- Expedited Partner Therapy

The goals of the STD Program in Michigan and at CMDHD are:

- Prompt reporting of cases
- The provision of screening and treatment services for Michigan's citizens
- The application of interviewing and case finding activities to reduce complications and intervene in the spread of disease





# HEALTH PROMOTION

## HEARING AND VISION SCREENING PROGRAM



Hearing and vision screenings are essential public health services provided at Central Michigan District Health Department. The screenings are age based and begin when a child is 3 years old and continues through 9th grade. These screenings are crucial for preventing delays in the development of speech, language, and social skills. These children are screened on site at preschools, public and private schools, and at the health department. Certified technicians are trained by Michigan Department of Health and Human Services.

**12,134**  
VISION  
SCREENINGS

**1,078**  
VISION  
TREATMENT  
REFERRALS

**7,475**  
HEARING  
SCREENINGS

**76**  
HEARING  
TREATMENT  
REFERRALS



# HEALTH PROMOTION

## RYAN WHITE PROGRAMS

Ryan White programs help support clients living with HIV/AIDS. We serve uninsured/underinsured clients from 64 counties in Michigan. We offer the following services:

- Infectious Disease & Primary Medical Care
- Mental Health
- Medical Nutrition Therapy
- Medical Case Management
- Non-Medical Case Management
- Emergency Financial Assistance
- Food Bank
- Medical Transportation
- Psychosocial Support
- Tobacco Cessation

**125**  
**INFECTIOUS**  
**DISEASE**  
**CLIENTS**

**RYAN WHITE**  
**CLIENTS**  
**99%**  
**VIRALLY**  
**SUPPRESSED**

**60**  
**PRIMARY**  
**CARE**  
**CLIENTS**

**14**  
**TOBACCO**  
**CESSATION**  
**CLIENTS**

**PROVIDED**  
**\$6,764**  
**NUTRITION**  
**SUPPORT**

**PROVIDED**  
**\$6,324**  
**HOUSING AND**  
**UTILITIES SUPPORT**

**PROVIDED**  
**\$2,850**  
**FOOD**  
**SUPPORT**

**PROVIDED**  
**\$6,610**  
**TRANSPORTATION**  
**SUPPORT**



# HEALTH PROMOTION

## HARM REDUCTION

### EXCHANGE CENTRAL - SYRINGE SERVICE PROGRAM

Syringe service programs are community-based programs that provide key pathways to services to prevent drug use, HIV, and viral Hepatitis. Those who inject drugs are at a high risk of contracting HIV and Hepatitis C due to risky practices like sharing needles. Also, those under the influence of substances can have impaired decision making. Through Exchange Central, CMDHD staff meet individuals where they are at, welcoming them to participate in free supplies and services.

**38**

**PARTICIPANTS**

**409**

**ENCOUNTERS**

**53,790**

**SYRINGES  
DISTRIBUTED**

**1,488**

**SYRINGES  
DISTRIBUTED**

**1,300**

**FENTANYL TEST  
STRIPS  
DISTRIBUTED**

**471**

**SHARPS  
CONTAINERS  
DISTRIBUTED**

# HEALTH PROMOTION

## HEPATITIS C

### GILEAD HEP C/HIV SCREENING & LINKAGE TO CARE

Since 2019, CMDHD has partnered with GILEAD through its FOCUS grant to provide additional Hepatitis C and HIV screening, testing, education, and linking into treatment.

- HIV/HCV screening and testing
- Education
- Treatment guidance
- Screening and referral to social services
- Free contraceptives

**12**

**INDIVIDUALS AB+**

**338**

**INDIVIDUALS SCREENED,  
EDUCATED, AND TESTED FOR  
HEPATITIS C**

**7**

**INDIVIDUALS RNA+ AND LINKED  
INTO CARE**



**397**

**INDIVIDUALS SCREENED,  
EDUCATED, AND TESTED FOR  
HIV**

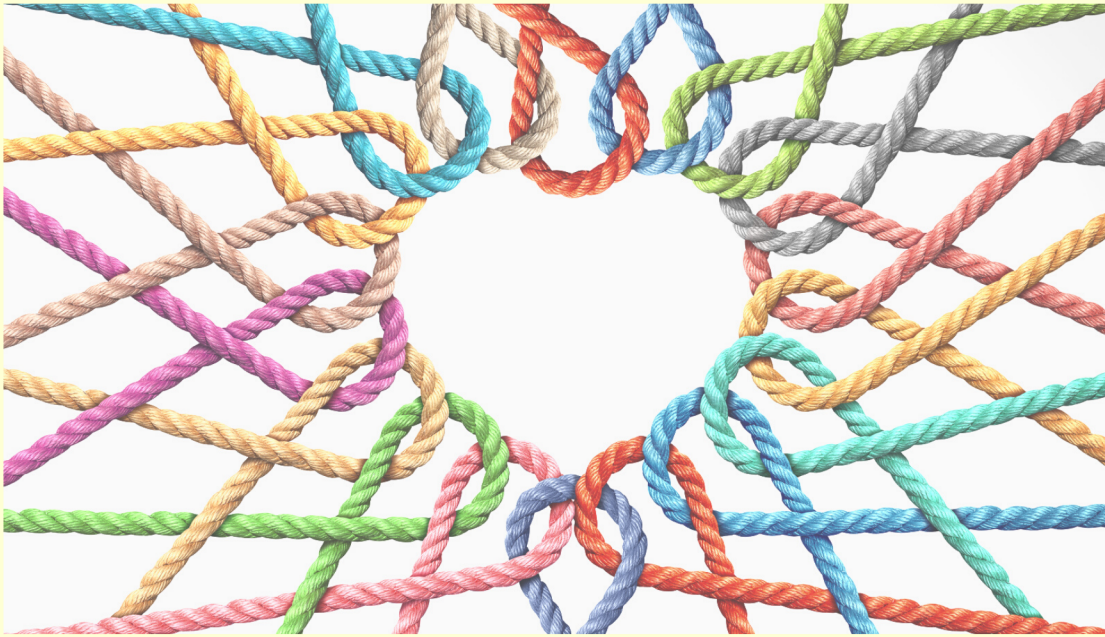
**1**

**INDIVIDUAL TESTED POSITIVE  
FOR HIV**



# HEALTH PROMOTION

## HIV PREVENTION PROGRAM



CMDHD's HIV prevention program screens, educates, tests, and refers to treatment for STDs. Our mission is to educate about HIV prevention along with other STDs and refer to our Family Planning Program for additional services. The HIV prevention program offers free testing and contraceptives for every client that comes through this program who are under-insured or uninsured. Staff are certified through the State of Michigan and undergo continuous education and training based on the most recent resources available.

**27**

**INDIVIDUALS TESTED POSITIVE FOR CHLAMYDIA AND TREATED**

**4**

**INDIVIDUALS TESTED POSITIVE FOR GONORRHEA AND TREATED**

**2**

**INDIVIDUALS TESTED POSITIVE FOR SYPHILIS AND TREATED**

**452**

**INDIVIDUALS SCREENED, EDUCATED, AND TESTED FOR CT/GC**

**336**

**INDIVIDUALS SCREENED, EDUCATED, AND TESTED FOR SYPHILIS**



# PERSONAL HEALTH

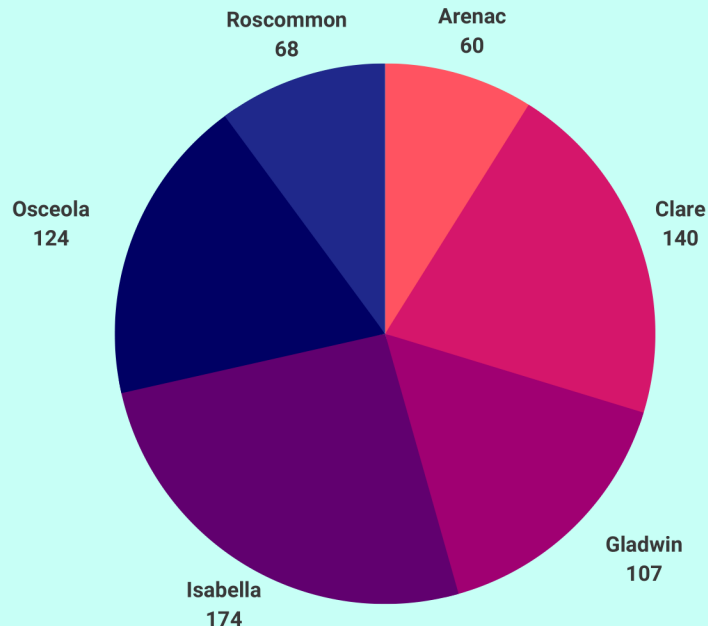
## CHILDREN'S SPECIAL HEALTH CARE SERVICES

CSHCS provides medical specialty care to children from birth to age 21 who have a qualifying medical diagnosis. Individuals aged 21 and over with cystic fibrosis or certain blood disorders may also qualify for these support services. CSHCS covers more than 2,700 physical conditions. The yearly fee is waived if the individual has Medicaid or MICHild. This program offers case management, care coordination, and referrals for specialty care or community-based services for children and families. There may be assistance to help with specialty bills, mileage, lodging, and locating community resources. CSHCS also helps prepare youth for transitioning into adult life by planning for future needs including health care, employment, education, and independent living. CMDHD also provides additional intensive services as needed, including case management and referrals to a specialist for diagnostic evaluation.



# 673

## TOTAL CLIENTS SERVED



# 525

## RENEWALS

# 80

## NEW ENROLLEES

# 428

## PLANS OF CARE

# 34

## UNITS OF CARE COORDINATION

# PERSONAL HEALTH

## COMMUNICABLE DISEASES

### FOODBORNE ILLNESS REPORTING



Foodborne illness (sometimes called food poisoning, foodborne disease, or foodborne infection) is common, costly, and preventable. You can get food poisoning after swallowing food that has been contaminated with a variety of germs or toxic substances. CMDHD investigates cases of foodborne illness, and also educates our community on safe food handling to prevent such cases. CMDHD offers a food safety ServSafe training class designed to train managers of food establishments on foodborne disease prevention. CMDHD also offers a Safe Food Worker training class. The Safe Food Worker class is a service for new food workers, current restaurant employees, convenience stores, delis, and other food preparation facilities. CMDHD's Environmental Health Division offers these classes on a regular basis for those in need of training.



#### Fiscal Year 2022 Foodborne Illness Reporting

	Campylobacter	Cryptosporidiosis	Giardiasis	Norovirus	Salmonellosis	Shiga-toxin E-coli (STEC)	Shigellosis	Yersinia Enteritis
Arenac	2	1	2	0	1	0	0	0
Clare	11	2	0	0	6	1	1	1
Gladwin	3	1	1	0	2	0	0	0
Isabella	6	1	4	5	6	3	3	0
Osceola	9	7	3	0	5	1	1	1
Roscommon	5	2	1	1	1	0	0	1

# PERSONAL HEALTH

## COMMUNICABLE DISEASE

### VACCINE-PREVENTABLE DISEASES REPORTING

Below is a chart detailing the vaccine-preventable disease that occurred in the CMDHD area.

CMDHD investigates each of these cases, but the best way to prevent future cases of these dangerous diseases is for everyone to stay up-to-date on vaccinations.

By getting vaccinated, you're protecting yourself and your community. Vaccines protect against infectious diseases that can cause serious illnesses and sometimes death.



Fiscal Year 2022 Vaccine-Preventable Illness Reporting

	Chickenpox	H. Influenza	Meningitis - Aseptic	Meningitis - Bacterial Other	Meningitis - Strep Pneumonia	Mumps	Pertussis	Shingles
Arenac	0	1	0	0	0	0	0	0
Clare	0	3	0	0	4	0	2	0
Gladwin	0	0	1	0	3	0	0	0
Isabella	0	1	1	2	5	0	0	0
Osceola	0	1	0	0	4	0	0	0
Roscommon	0	1	0	0	2	0	0	0



# PERSONAL HEALTH

## COMMUNICABLE DISEASES

### RABIES REPORTING



Rabies is a fatal disease transmitted from animals to humans and is caused by a virus that attacks the central nervous system. It can cause convulsions, paralysis, and death if left untreated. The virus is present in the saliva of a rabid animal and is transmitted primarily by animal bites. All warm-blooded animals can be affected by the virus, but it is most often found in wildlife such as raccoons, skunks, foxes, and bats. Dogs and cats may also contract rabies if they are not vaccinated against it. CMDHD's staff follows up on all potential rabies exposure cases to assure the safety of the public.

**45**

**BATS TESTED POSITIVE FOR RABIES (STATEWIDE)**

**1**

**SKUNK TESTED POSITIVE FOR RABIES (STATEWIDE)**

**1**

**CAT TESTED POSITIVE FOR RABIES (STATEWIDE)**

Fiscal Year 2022 Rabies Reporting

	Animals	Rabies Postexposure Prophylaxis (PEP)
Arenac	0	48
Clare	0	109
Gladwin	0	79
Isabella	0	146
Osceola	0	53
Roscommon	0	44

# PERSONAL HEALTH

## COMMUNICABLE DISEASES

### COVID CASE INVESTIGATIONS

CMDHD, along with the Michigan Department of Health and Human Services (MDHHS) and the Centers for Disease Control (CDC), conducted COVID case investigations. These investigations were integral to decrease and eliminate the spread of COVID-19 in our counties. In addition to conducting disease case investigations, our agency nurses, health educators, and administrators provided resource management to individuals infected with COVID-19. We were fortunate to use a web-based client resource management platform to call or text all individuals diagnosed with COVID-19. This system allowed us to be very timely and cost efficient, getting information to positive cases within the same day as their positive result. We were able to refer individuals to medical providers for any worsening symptoms and provided information about isolation precautions. Gathering all potentially-exposed contacts of positive cases was also part of our established protocols, and we provided those contacts with instructions for quarantine. We also coordinated with the CDC Foundation and had trained individuals who provided most of the case investigations and information gathering through online technology.



Our staff worked 7 days a week to provide support, education, resources, and encourage COVID-19 vaccination.

# 25,993

## CONFIRMED AND PROBABLE COVID-19 CASES

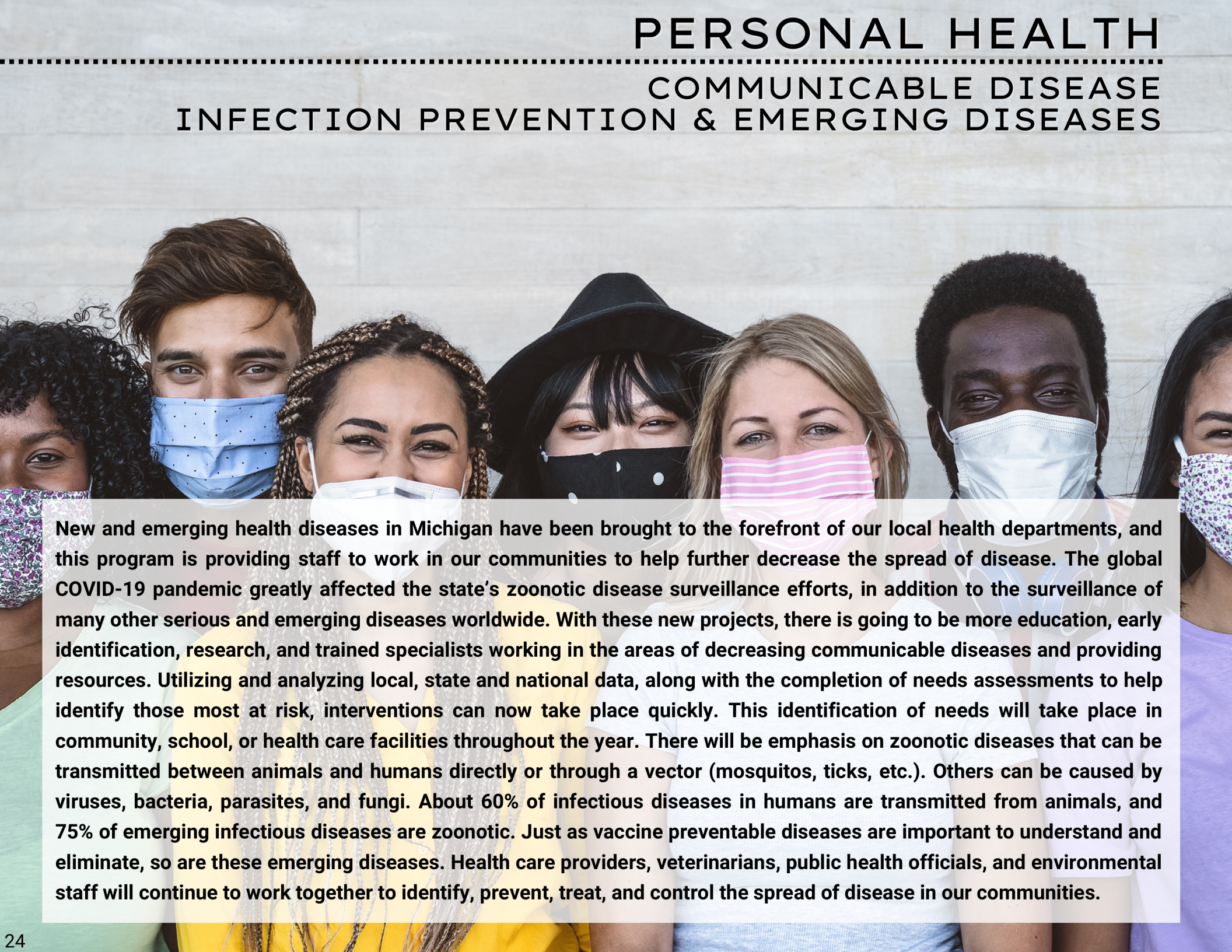
	Arenac	Clare	Gladwin	Isabella	Osceola	Roscommon
Positive COVID Cases	2,172	4,664	3,459	9,354	3,214	3,130



# PERSONAL HEALTH

---

## COMMUNICABLE DISEASE INFECTION PREVENTION & EMERGING DISEASES



**New and emerging health diseases in Michigan have been brought to the forefront of our local health departments, and this program is providing staff to work in our communities to help further decrease the spread of disease. The global COVID-19 pandemic greatly affected the state's zoonotic disease surveillance efforts, in addition to the surveillance of many other serious and emerging diseases worldwide. With these new projects, there is going to be more education, early identification, research, and trained specialists working in the areas of decreasing communicable diseases and providing resources. Utilizing and analyzing local, state and national data, along with the completion of needs assessments to help identify those most at risk, interventions can now take place quickly. This identification of needs will take place in community, school, or health care facilities throughout the year. There will be emphasis on zoonotic diseases that can be transmitted between animals and humans directly or through a vector (mosquitos, ticks, etc.). Others can be caused by viruses, bacteria, parasites, and fungi. About 60% of infectious diseases in humans are transmitted from animals, and 75% of emerging infectious diseases are zoonotic. Just as vaccine preventable diseases are important to understand and eliminate, so are these emerging diseases. Health care providers, veterinarians, public health officials, and environmental staff will continue to work together to identify, prevent, treat, and control the spread of disease in our communities.**



# PERSONAL HEALTH

## HOME VISITING PROGRAMS

### MATERNAL INFANT HEALTH PROGRAM (MIHP)

Maternal Infant Health Program (MIHP) is Michigan's statewide evidence-based home visitation program for Medicaid eligible pregnant people and infants. MIHP nurtures health and wellness throughout pregnancy and infancy by partnering families with caring, trusted, and knowledgeable home visitors who serve the goals and needs of each family.

Governor Whitmer's *Healthy Moms, Healthy Babies* initiative is making investments in several state programs to help improve health outcomes for pregnant parents and their children. CMDHD's MIHP has partnered with the University of Michigan Youth Policy Lab to participate in a pilot program to determine if expanding billable MIHP services will better help meet families' needs. This pilot program helps our MIHP visitors address social determinants of health for the families we serve. CMDHD's MIHP joined the pilot in February 2022.



# 3,238

**ROUTINE VISITS  
(HOME, OFFICE, & TELEHEALTH)**

# 626

**VISITS TO ADMIT A PERSON  
INTO MIHP  
(HOME, OFFICE, & TELEHEALTH)**

# 182

**HEALTHY MOMS, HEALTHY  
BABIES  
ENHANCED PILOT SERVICES**



# PERSONAL HEALTH

## HOME VISITING PROGRAMS

### HEALTHY FUTURES

Healthy Futures is a local program that connects families to local resources and information, with telephone calls, in person home visits after delivery of a newborn, and newsletters throughout pregnancy until the child's 5th birthday. With this initiative, many health improvements have been demonstrated. Healthy Futures is a program administered in collaboration with Munson Healthcare and the Health Department of Northwest Michigan. There are many health departments in northern Michigan that participate across the region to improve the health of moms and babies. Some of the direct outcomes have been to provide safe sleep education to women during their in-person visit and phone visits through the Healthy Futures curriculum. The families have received an assessment of infant sleep location prior to delivery and education for alternatives if any sleep situation is not deemed safe. Our CMDHD staff also provide breastfeeding education and support at in-home visits to postpartum individuals within 1-3 days of hospital discharge and follow up as needed 4-6 weeks later, and sooner if indicated. All pregnant health department clients are offered enrollment in Healthy Futures during their first health department (WIC, MIHP, IMMS, etc.) visit.

**296**  
**CHILDREN**  
**ENROLLED**

**484**  
**TOTAL**  
**CONTACTS**  
**MADE**

**456**  
**TELEPHONE**  
**CONTACTS**

**28**  
**HOME VISITS**



# PERSONAL HEALTH

## HOME VISITING PROGRAMS

### HEALTHY FAMILIES (ROSCOMMON COUNTY)

Healthy Families Northern Michigan is a voluntary home visiting program in Roscommon County. This program supports a family's journey from pregnancy through 4 years of age for those with the highest needs.

The registered nurse makes regular visits to build a support and help build secure relationships between parents and young infants and children, discussing developmental milestones, and promoting activities and play. Healthy Families focuses on promoting positive baby development with intensive visits and interaction in the home. The family visits take place most often weekly and continue until the child is four years of age.



**6**  
**NEW**  
**REFERRALS**

**4**  
**FAMILIES**  
**DISCHARGED**

**14**  
**FAMILIES**  
**ENROLLED**

**208**  
**VIRTUAL**  
**VISITS**

**152**  
**HOME**  
**VISITS**

**1**  
**FAMILY (WITH TWINS!)**  
**SUCCESSFULLY COMPLETED**  
**PROGRAM**



# PERSONAL HEALTH

## IMMUNIZATIONS AND INFLUENZA



Vaccines help prevent infectious diseases that can cause serious illnesses and sometimes death. Immunizations are one of the most important preventative health services that can be provided to protect ourselves, loved ones and our communities. Our health department provides age-appropriate vaccinations and health education from registered nurses, and we assure that vaccines are available for all ages including flu vaccinations, in addition to the COVID-19 vaccines that were provided this year. We offer vaccinations to those with and without medical/insurance coverage. All children are vaccinated regardless of the ability or inability to pay. Additionally, there are some other low cost vaccine options for adults.

	Arenac	Clare	Gladwin	Isabella	Osceola	Roscommon
Regular Immunizations	563	1,070	1,176	1,525	585	393
Flu Shots	361	710	661	1,201	339	134
Waivers	38	81	74	119	90	50
TB Tests	111	127	91	170	108	40

# PERSONAL HEALTH

## COVID IMMUNIZATIONS

COVID vaccinations that were initiated in late 2020, and were highly encouraged in 2021, were still a very important part of 2022 to mitigate the spread of COVID-19.

Until late in 2021, only a single booster dose of COVID-19 vaccines was authorized for administration to individuals 65 years of age and older, individuals 18 through 64 years of age at high risk of severe COVID-19, and individuals 18 through 64 years of age with frequent exposure to COVID-19.

By 2022, CMDHD was actively working to expand the use of booster doses to include all individuals 18 years of age and older at least six months after completion of the primary vaccination series of COVID-19 vaccine.

Then in the late summer and early fall, COVID-19 vaccine was available in the bivalent formulations for use as a single booster dose at least two months following primary or booster vaccination. The rapidly-changing vaccines and dosing recommendations based on FDA authorizations and CDC recommendations have required additional resources to continue to protect the families in our communities



# 17,435

## COVID-19 VACCINATIONS GIVEN

	Arenac	Clare	Gladwin	Isabella	Osceola	Roscommon
COVID Vaccinations	1,694	4,240	3,576	5,088	1,378	1,459



# PERSONAL HEALTH

## WOMEN, INFANTS, AND CHILDREN (WIC)

The Special Supplemental Nutrition Program for Women, Infants, and Children (WIC) is a federally-funded program via the Food and Nutrition Services department of the USDA. These important services provide healthy foods, health screenings, and nutrition education for families in our communities. At CMDHD, we take great care in providing WIC services in a way that improves pregnancy, health, and nutrition outcomes for our communities and encourages our clients to come back month after month. Many families in our area qualify for WIC, including many working families, due to the WIC income requirement levels. WIC provides healthy foods to families including pregnant, postpartum, breastfeeding individuals, and children up to the age of 5. During the state review of our local CMDHD WIC program, we received outstanding feedback from local agency clients, including: "They are like our second family," "Wonderful staff," and "The breastfeeding gals are amazing!" CMDHD takes great pride in offering a thorough and welcoming WIC program for our communities.



County	Number of WIC Participants	WIC Food Dollars
Arenac	465	\$260,583
Clare	950	\$526,880
Gladwin	636	\$357,158
Isabella	1,782	\$982,901
Osceola	767	\$427,447
Roscommon	490	\$274,869

# PERSONAL HEALTH

## LAB SERVICES HGB & LEAD TESTING

CMDHD tests all children's iron status who are on WIC. In addition to this, all children with Medicaid and enrolled in WIC have their blood tested for lead poisoning. Screening and treatment for anemia and lead poisoning help to maintain children's health and encourage normal growth and development. Three key nutrients play a role in protecting the body from the harmful effects of lead: calcium, iron, and vitamin C. These nutrients help the body absorb less lead and are part of a healthy diet. Many foods that are available with the WIC program are high in these nutrients. If either of these tests are abnormal, follow up involves education, referral to medical providers, and nutrition counseling by a registered dietician.



	Arenac	Clare	Gladwin	Isabella	Osceola	Roscommon
Lead Tests	57	112	169	88	23	49
Hgb Tests	182	195	365	170	62	90

# 498

## LEAD TESTS ADMINISTERED

# 1,064

## HGB TESTS ADMINISTERED



# PERSONAL HEALTH

## LAB SERVICES ORAL SCREENINGS/DENTAL SERVICES



Treating cavities is important, but preventing cavities is best. That is why our WIC program is continuing to provide dental varnish treatments to protect teeth by making them stronger and more resistant to acid. All children ages 1-5 enrolled in the WIC program and on Medicaid are eligible for a free dental screening and fluoride varnish treatment.

Dental health is also an important part of prenatal care. Pregnancy increases the risk of certain dental problems that lead to pregnancy complications, like premature birth. Taking good care of your mouth, teeth, and gums during pregnancy can help you have a healthy pregnancy and a healthy baby.

	Arenac	Clare	Gladwin	Isabella	Osceola	Roscommon
Oral Screenings	9	13	77	1	3	0

# 103

## ORAL SCREENINGS INCLUDING FLUORIDE VARNISH APPLICATIONS

# PERSONAL HEALTH

## WOMEN, INFANTS, AND CHILDREN (WIC) BREASTFEEDING PEER COUNSELORS

Within the Special Supplemental Nutrition Program for Women, Infants, and Children (WIC), CMDHD offers additional support for all pregnant and postpartum families who wish to breastfeed. Support is here for all members of the family, including dads and grandparents. Breastfeeding support is offered for clients and community members in a variety of ways to help increase the number of moms that start breastfeeding and support them to help them breastfeed for as long as they can. We strive to reach nationwide breastfeeding goals and standards, as this is the most economical and healthy way to feed infants.

Our peer counselors support all moms that cannot breastfeed or choose other forms of infant nutrition, as the peer counselors are infant feeding specialists! Our Breastfeeding Peer Counselors are a large source of support for our clients and community members at CMDHD. Our Peers at CMDHD have established creative methods of engaging clients and promoting breastfeeding -- this includes virtual and in-person support groups, use of a warmline for 24/7 support, and breastfeeding parties for community members and clients to show support of Breastfeeding Awareness Month. CMDHD is proud to offer a range of breastfeeding supports and services to help make each breastfeeding journey successful.

	Arenac	Clare	Gladwin	Isabella	Osceola	Roscommon
Client Contacts	202	686	594	911	190	210
Peer Outreach Activities	3	15	13	4	0	0
Breastfeeding Rate	81%	76%	82%	80%	77%	76%



# PERSONAL HEALTH

## MEDICAID OUTREACH



All clinical staff at CMDHD encourage our clients to regularly seek care from their medical provider. In addition, for those who do not have insurance, have Medicaid or are Medicaid-eligible, other services are widely promoted by the CMDHD staff. We work hard to assure that all community members have access to needed medical care when necessary.

CMDHD has trained Certified Applicant Counselors that aid with health insurance applications and answering questions pertaining to health insurance. CMDHD has assisted low-income families with no health care coverage to apply for Insurance through MI Bridges.

Medicaid provides comprehensive health care services to low-income adults and children. Without Medicaid these families would be without health insurance and would be unable to obtain the medical assistance that they require. CMDHD also assisted people with applying for healthcare coverage through the HealthCare.gov Marketplace.

During open enrollment periods, our Community Health Workers can assist with helping community members understand their insurance options Michigan if they do not qualify for Medicaid. We are here to support you and your family!



# PERSONAL HEALTH

## COMMUNITY CONNECTIONS COMMUNITY HEALTH WORKERS/MHP CONTRACTS

---

Community Health Workers (CHWs) are community advocates who assist families and individuals when they need healthcare and/or social services.

CHWs can help community members by connecting them to primary care and medical service; linking to appropriate community resources, including housing, transportation, food, education, and utilities; helping to navigate MI Bridges (Medicaid), Healthcare Marketplace, and agency services; and supporting lifestyle changes to improve health and wellbeing.

Most significant needs for referral include behavioral health, health insurance/medical referral, housing/shelter, and food security.

CMDHD's Community Connections program began July 1, 2022.

# 699

## OUTREACH COMMUNICATIONS TO COMMUNITY FAMILIES

# 221

## COMMUNITY NEEDS ADDRESSED



## SUPPORTED/CONTRIBUTED TO

# 15

## COMMUNITY OUTREACH EVENTS

# 76%

## OF THOSE ASSISTED UNDER THE AGE OF 40



# PERSONAL HEALTH

## HEALTH RESOURCE ADVOCATES/SAFER SCHOOLS



In 2022, CMDHD has 2 full time HRAs, and we were able to hire a third full time HRA in August of 2022 for the upcoming school years.

HRAs provide front-line support for COVID-19 testing and reporting, help identify emerging COVID-19-related health concerns, and assist with the implementation of best health practices. This is a voluntary program, where COVID-19 testing is just one element.

Our HRAs have assisted with the REFRESH program providing necessary menstrual and hygiene products to our schools, worked at health fairs, helped plan immunization clinics, and worked on many other projects that encompass COVID-19-related wellness services, such as mental health and wellness, health education, and nutrition.

Our 3 HRAs are a registered nurse, registered sanitarian and health educator by background, which has enabled our agency to provide a wide array of services and support to our schools and their staff.

**102**  
**SCHOOLS SERVED**

**120,000**  
**POTENTIAL STUDENTS**  
**SERVED**

**REFRESH** 

# SOCIAL MEDIA PRESENCE

**10,484**  
FACEBOOK  
PAGE VISITS

**4,962**  
FACEBOOK  
FOLLOWERS

THE MAJORITY  
OF OUR FACEBOOK  
FOLLOWERS ARE  
**FEMALE**

**22%**  
OF FACEBOOK  
FOLLOWERS  
ACCESS OUR  
PAGE FROM  
MT. PLEASANT

**80,067**  
FACEBOOK PAGE  
REACH

BETWEEN  
**AGES 25-54**





# LOCATIONS

## **ARENAC COUNTY BRANCH OFFICE**

4489 W. M-61, Suite 3  
Standish, MI 48658  
PO Box: 734  
Phone: (989) 846-6541  
FAX: (989) 846-0431



## **GLADWIN COUNTY BRANCH OFFICE**

103 N. Bowery  
Gladwin, MI 48624  
Phone: (989) 426-9431  
FAX: (989) 426-6952



## **MARION BRANCH OFFICE**

101 E. MAIN STREET  
P.O. BOX 39  
MARION, MI 49665  
PHONE: (231) 743-9877  
FAX: (231) 743-2140



## **ROSCOMMON COUNTY BRANCH OFFICE**

200 GRAND AVE SUITE A  
PRUDENVILLE, MI 48651  
PHONE: (989) 366-9166  
FAX: (989) 366-8921



## **CLARE COUNTY BRANCH OFFICE**

815 N. Clare Ave.  
Harrison, MI 48625  
Phone: (989) 539-6731  
FAX: (989) 539-4449



## **ISABELLA COUNTY BRANCH OFFICE**

2012 E. Preston St.  
Mt. Pleasant, MI 48858  
Phone: (989) 773-5921  
FAX: (989) 773-4319



## **OSCEOLA COUNTY BRANCH OFFICE**

22054 PROFESSIONAL DR.  
SUITE D  
REED CITY, MI 49677  
PHONE: (231) 832-5532  
FAX: (231) 832-1020



## **ROSEBUSH BRANCH OFFICE**

4011 E ROSEBUSH ROAD  
ROSEBUSH, MI 48878  
PHONE: (989) 726-4405  
FAX: (989) 433-8022







# Central Michigan District Health Department

*Promoting Healthy Families, Healthy Communities*

**Established in 1970**

Accredited with Commendation by the  
Michigan Local Public Health  
Accreditation Commission  
and Public Health  
Accreditation  
Board